

Flint Hills Area Transition and Community Resource Information Packet

This packet serves as an informational resource for individuals with disabilities and their families as students transition out of high school and enter the post-secondary world. This packet also includes information about local agencies and resources including recreation, transportation, and mental health services.

❖ **Calendar of annual events:**

Disability Mentoring Day (youth aged 14-24) annually in mid-October

Designed to inform high school students with disabilities about post-graduation educational opportunities and broaden their understanding of employment and career possibilities.

Phone: 785-456-9915

Website: <https://www.threeriversinc.org/>

Reverse Job Fair (high school juniors seniors) – annually in Mid-November

Job seekers are positioned at tables with their resumes, while employers move around to visit the booths. This event provides a fantastic opportunity to connect motivated job seekers with local employers. Participants will include youth and adults with disabilities.

Phone: 785-456-9915

Website: <https://www.threeriversinc.org/>

Job Olympics (high school juniors seniors) – annually in March

Job Olympics is a high school competition developed to promote transition, employability, and independent living skills.

Phone:

Website:

Work Based Learning Classes (youth aged 14-24) – as needed throughout the year

Prepares transition age youth for employment by providing classes and connecting them with local employers.

Phone: 785-456-9915

Website: <https://www.threeriversinc.org/>

See <https://www.threeriversinc.org/> for a more comprehensive event calendar

Apply for Vocational Rehabilitation (VR) services

Phone: 1-866-213-9079

Website: <https://www.dcf.ks.gov/services/RS/Pages/Employment-Services.aspx>

After the age of 14, VR may be able to access funding to cover the costs of need to access community services if related to employment. Services include employment and job training, job placement, physical and mental restoration, and more.

Apply for Social Supplemental Security Income (SSI)

Website: <https://www.ssa.gov/apply/ssi>

Phone: 1-800-772-1213

SSI is a cash supplement your child may be eligible to receive which can help support him or her financially. Some people may qualify for SSI before turning 18, and some may not qualify until after. Household income is a consideration for minors but may not be for those individuals over the age of 18. Approximately 70% of applicants are denied SSI. Do not be surprised if your child is denied assistance. If this happens, appeal the process within the given time frame rather than reapplying. If you need legal assistance in the matter, you may choose to contact an attorney or obtain assistance through Kansas legal services

Apply for Medicaid (KanCare)

Website: <https://www.kancare.ks.gov/>

Phone: 1-800-792-4884

Medicaid provides health services and access to medical care to children and families in need and for individuals with disabilities. In Kansas, the medical services program is referred to as KanCare and contracts with three private insurance companies which serve as managed care organizations (MCO). KanCare funds home and community-based services (HCBS) in Kansas. Many individuals with disabilities will access HCBS funding such as home supportive care, residential, or day services to live as independently as possible within their community. **Individuals applying for KanCare are required to apply for SSI.** These are separate government agencies, and applications will need to be made separately. Individuals who already receive SSI will be presumed eligible for KanCare but will still need to go through the application process.

For a complete and comprehensive transition checklist visit:

<https://www.transitioncouncil-scks.org/transition-checklists>

❖ IDD Information

Contact your local county developmental disability organization (CDDO). They serve as a single point of application intake and referral for children and adults with IDD.

There's an approximately **10-year waiting list** to receive funding. To access services, begin this process as soon as possible to increase the chances of your student accessing these services at the time they need them.

You can access case management services without being eligible for HCBS funding. A targeted case manager will be able to assist you in accessing services and gathering information about contract providers.

If you need services prior to your child's name coming up on the waiting list, there are other programs and options that may be able to help you get what you need. Incidental client support, Family support, One-time funds, and Crisis funding.

Determine if guardianship is needed

Different types of guardianship are available upon the specific needs of the individual, and an attorney will need to be obtained (estimated cost is usually \$500 to \$1000). Kansas legal services may be able to assist with obtaining guardianship at a reduced cost.

Consider setting up a **special needs trust** or **ABLE** account. Under current federal law any inheritance of more than \$2000 disqualifies individuals with disabilities from most federal need-based assistance benefits from public assistance programs may also be impacted.

Day services-

Big Lakes Developmental Center, Inc.

Phone: 785-776-2600

Website: <https://www.biglakes.org/dayservices>

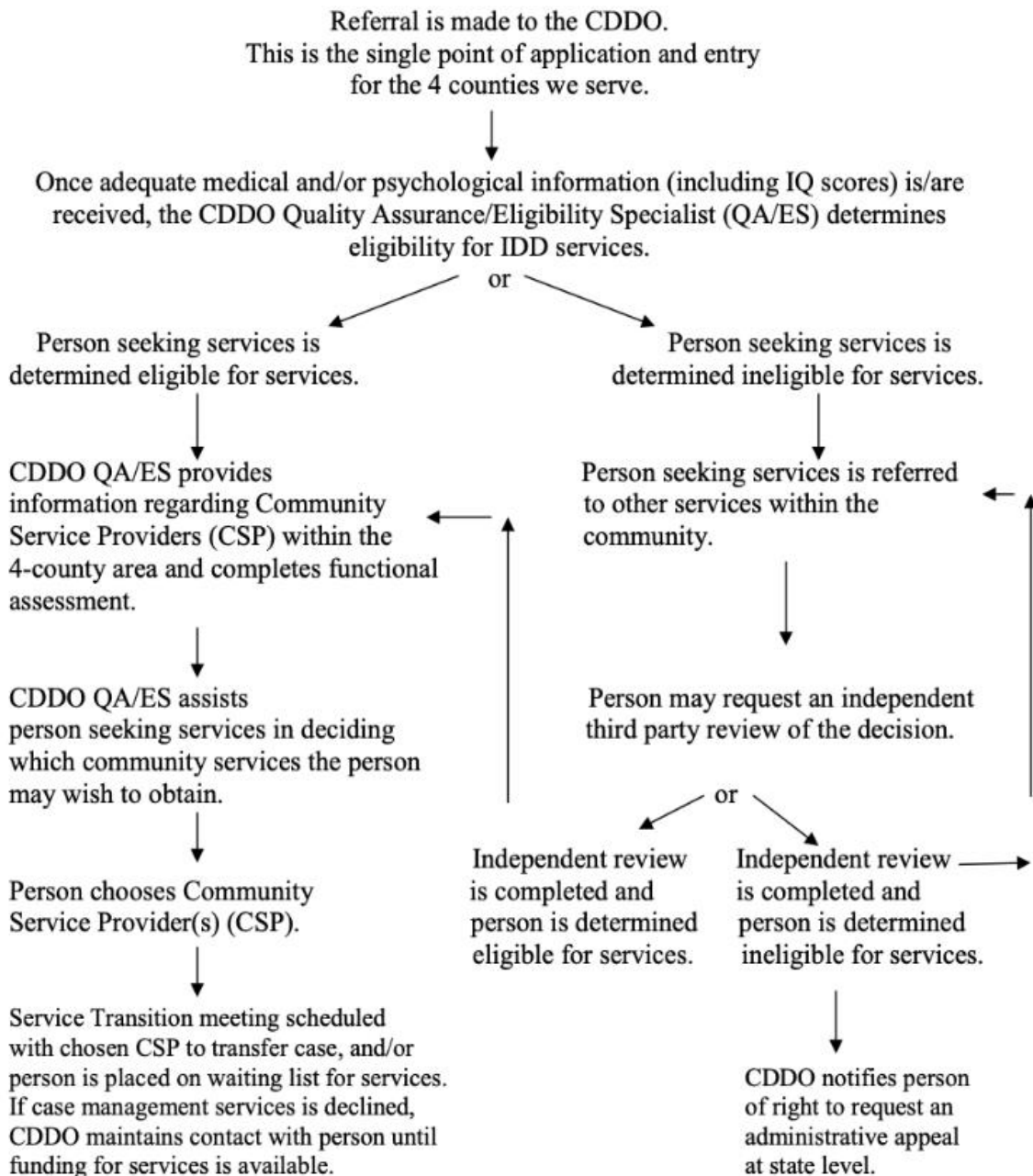
ResCare

Phone: 785-587-1857

Website: www.rescare.com

Big Lakes Developmental Center, Inc.
 Community Developmental Disability Organization (CDDO)
 For Geary, Riley, Clay, and Pottawatomie counties
 P.O. Box 114, Manhattan, KS 66505
 Phone: (785) 776-2600 Fax: (785) 776-2610 E-mail: CDDO@biglakes.org

CDDO admissions process for accessing Intellectual and Developmental Disability (IDD) services:



❖ Supported Employment

Big Lakes Developmental Center

Phone: 785-776-9201

Website: <https://www.biglakes.org/>

Single point of contact for resources and information to help people with disabilities transition to adulthood. Services provided include case management, residential, employment, and day services to individuals with IDD.

Manhattan Area Chamber of Commerce

Phone: 785-776-8829

Website: <https://www.manhattan.org/>

A non-profit voluntary organization of citizens working to support the business development of Manhattan. Can assist with networking and locating job opportunities.

Workforce One

Phone: 785-493-8018

Website: <https://ksworkforceone.org/>

Provides work-based learning, arranges internships, job shadows, work experiences, company tours and career fairs, to give students practical experience in their own communities.

Vocational Rehabilitation and Pre-Employment Transition Services

Phone: 1-866-213-9079

Website: www.dcf.ks.gov

Pre-ETS services are available to students aged 14-21. They provide job exploration and counseling on post-secondary education and employment to students with disabilities.

Vocational Rehabilitation is designed to assist individuals in obtaining their employment goals. Services include assessments, vocational guidance, training and education, and obtaining telecommunication aids and adaptive devices.

Three Rivers, Inc.

Phone: 785-456-9915

Website: <https://www.threeriversinc.org/>

Empowers people with disabilities to live work and be active members of their communities. Services include independent living skills training, youth transition, in-home services, and advocacy.

❖ **Continued Learning Opportunities**

Manhattan Area Technical College

Phone: 785-587-2800

Website: <https://manhattantech.edu/>

Provides technical, general, and adult education in a variety of programs such as welding, automotive, and medical technology. Many students who complete an associate’s degree obtain secure employment through apprenticeships and partnership with the college.

UFM Community learning Center

Phone: 785-539-8763

Website: <https://tryufm.org/>

Offers a variety of classes and programs for the community such as a community garden, art, humanities, health and wellness, culture, environmentalism, science, and much more.

University of Kansas Transition to Postsecondary Education Program (KU-TPE)

Phone: 785-864-0686

Website: <https://tpe.ku.edu/>

College certificate program for young adults with intellectual disabilities designed for students with IDD to have inclusive education for future academic and career success.

❖ Recreation

Manhattan Parks and Recreation Special Communities

Phone: 785-587-2757

Website: <https://www.manhattanks.gov/3243/Parks-Recreation/>

Offers a variety of year-round programs, events, and services for children, teens, adults, and seniors. They are designed to develop, enhance, and/or maintain leisure skills, motor skills, and socialization as well as to promote fun and enjoyment.

Manhattan Special Olympics

Phone: 913-236-9290

Website: <https://soks.org/>

Provides athletic opportunities such as basketball, volleyball, and track and field for individuals with intellectual and developmental disabilities, aged 8 and up. MSO is offered at no cost to athletes.

Boys and Girls club

Phone: 785- 539-1947

Website: <https://www.bgca.org/>

Provides a safe space for youth to learn and grow through life-enhancing programs. The staff engages members in fun and educational activities to help youth exceed.

❖ Community Resources

Be Able Community Center

Phone: 785-775-1205

Website: <https://beablecommunity.com/>

Through the day services program individuals are connected to medical and mental health resources, employment training, and housing assistance. Be Able also offers case management services.

Crisis Center, Inc.

Phone: 785-539-2785 24/7 Hotline: 800-727-2785

Text: HEAL to 847411

Website: <https://www.thecrisiscenterinc.org/>

Provides confidential, round-the-clock services to victims of sexual or domestic violence. Services include crisis intervention, counseling, advocacy, and safe shelter.

Thrive!

Phone: 877-376-0032

Website: <https://www.thriveflinthills.com/>

Works with individuals to reduce poverty by building skills and relationships. After a 10-week training, individuals are matched with volunteers from the community to work as a team for 18 months to build the resources needed to improve their lives.

❖ Therapeutic Services

Ad Astra MHK

Phone: (785) 370-6460

Website: <https://www.adastramhk.com/>

Offers a range of services including ABA therapy, Caregiver Coaching, and Consultation for Professionals. They utilize a multidisciplinary, team-based model to provide comprehensive expertise by working with therapists, social workers, educators, etc.

No Stone Unturned

Phone: [785-587-1825](tel:785-587-1825)

Website: <https://www.nostoneuntuned.org/>

Driven by the belief that children with disabilities deserve access to the services they need. They provide customized services in occupational therapy, speech-language pathology, physical therapy, and applied behavioral analysis.

❖ **Mental Health Services**

Katie's Way

Phone: [\(785\) 320-7331](tel:(785)320-7331)

Website: <https://katiesway.com/>

Provides evidence-based assessment and treatment of behavioral and mental health conditions for children and young adults, ages 2-26.

Pawnee Mental Health Services

Phone: (785) 587-4300

Website: <https://www.pawnee.org/>

Licensed mental health and substance abuse center serving 10 north central Kansas counties. Provides counseling services for children, adults, and families.

❖ **Transportation**

Flint Hills Area Transportation Agency (aTa Bus)

Phone: 785-537-6345

Website: <https://www.fhata.org/>

ATA bus plans, manages, and operates public transportation in Riley, Geary, and Pottawatomie counties. ATA bus is committed to offering safe and reliable services to all riders without regard to race, gender, age, or disability.

Didn't find what you were looking for? Feeling overwhelmed? Contact us at 785-456-9915 to be connected with a resource team!